

WAYFINDING PRODUCTS

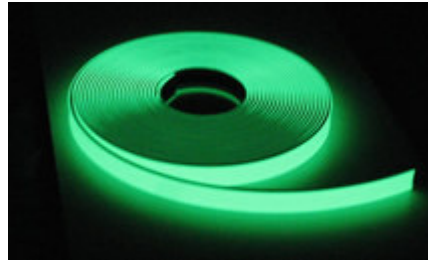
Extruded 1" Glow Strip

1" Glow Strip with 3M HATS tape available in 50' rolls or cut to custom lengths.

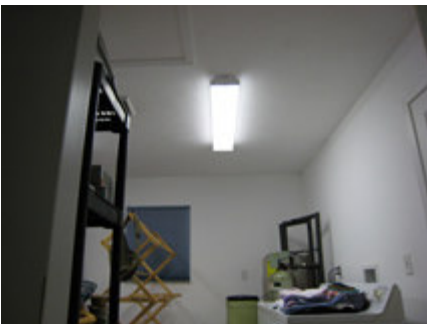
- Available to MEA standards for low level egress
- Available with heavier pigment for supplemental lighting use in fluorescent fixtures. Great during power outages.

PRODUCT CODE NUMBER:

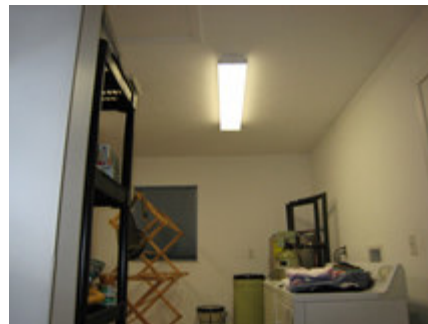
SP1GS (1" Glow Strip)



Fluorescent light fixture with glow strips installed



Lights On



Lights Off!



Extruded 4" Commercial Baseboard

4" Commercial Baseboard with 1" glowstrip in the center.

- Available in 30' rolls or 4' strips.
- Comes standard in Black, Dark Brown, Tan and Light Gray. Large orders can be produced using custom colors.
- Construction and Afterglow greatly exceed MEA Standards.

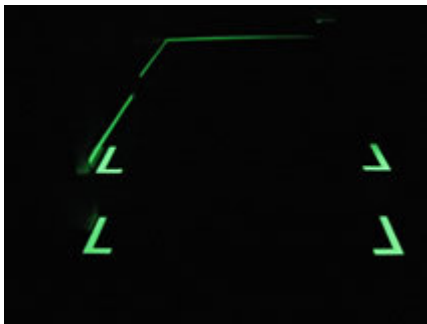
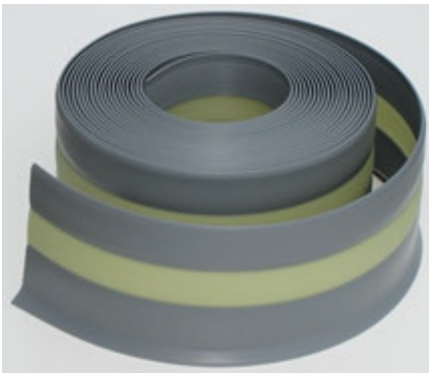
PRODUCT CODE NUMBERS:

SPBBB (Black Baseboard)

SPBBG (Gray Baseboard)

SPBBLT (Light Tan)

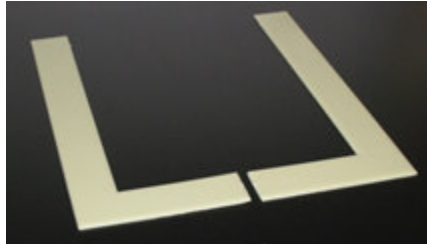
SPBBDB (Dark Brown)



Stairway L's

PRODUCT CODE NUMBERS:

SPSL (Stairway L's)



Injection Molded Door Rings

PRODUCT CODE NUMBERS:

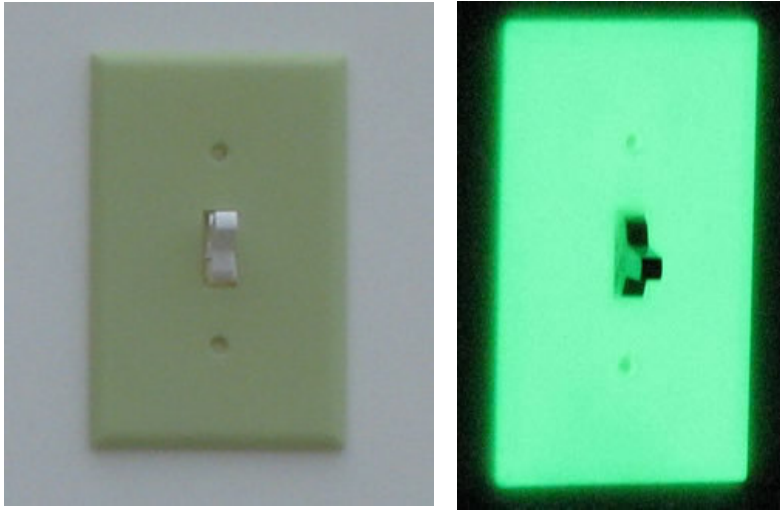
SPDR (Door Rings)



Injection Molded Light Switch Plates

PRODUCT CODE NUMBERS:

SPLSP (Light Switch Plates)



SAFE PASSAGE, INC. | 14766 ELM DRIVE | MARCELLUS, MI 49067 | 269.303.1093
www.safepassageinc.com